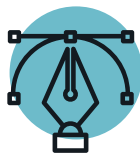


Design Automation Batch



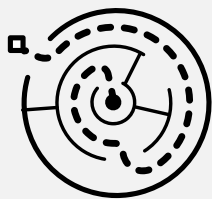
The Challenge

Your customers want custom designs quickly and accurately. This puts your engineers at the center of the design process and speed is essential. Without a proper solution proposals and drawings can be left up to guess work due to inefficient processes.

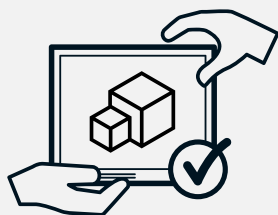
Our Solution

Tacton Design Automation Batch enables you to batch run design automation projects defined in Tacton Design Automation Studio.

Features and Benefits



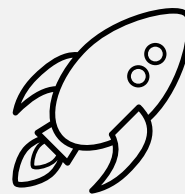
Update all parameters in 2D and 3D models and drawings



Dynamically generate configuration-specific 3D CAD models based on customer requirements



Generate documents for all valid configurations

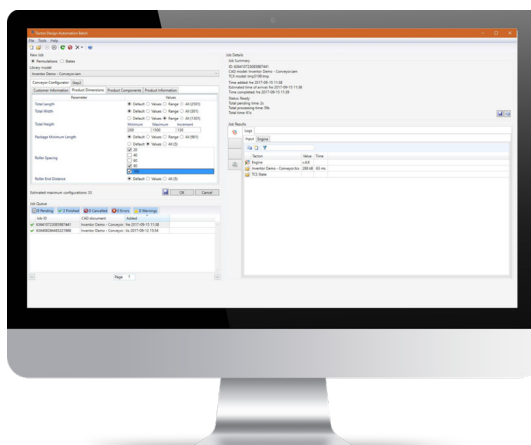


Produce 100% accurate drawings for an enhanced customer experience

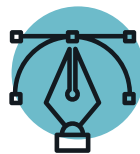
Key Use Cases

Design Automation Batch

- Leverage your CAD investment to create value-adding sales deliverables
- Generate documents for all valid configurations
- Show customers the optimal product design



Design Automation Batch Technical Specs



Key Features

- Compatible with all Tacton standard products
- Out-of-the-box installation
- Built-in queue system
- Supports exports of both native and all standard file formats supported by the CAD software
- Contains a standard API for add-on development
- Can integrate to external systems such as ERP, CRM, PDM and PLM systems
- Supports customer-specific add-ons so you can customize and complement the standard functionality
- Product data is maintained separately from configuration rules making it fast and easy to
- Access to Knowledge Base online support

Availability

- SOLIDWORKS®

Configuration

- Constraint-based configuration means dramatically fewer rules
- Always presents the solution that best meets the customers' needs
- Highly scalable – the stateless configuration engine handles complex models and high user loads with ease and speed
- All variables simultaneously considered. Ensures valid, error-free configuration – every time

Maintenance & Support

- No programming or IT expertise needed